

## Datenblatt / Datasheet

# Low Profile Antenne Low Profile Antenna

## GPS 18 90 LP/S/...

Erz-Nr. / Ord. code

## 920 062-...

### GPS / CELLULAR

- Empfangsantenne für GPS-Satellitensignale zur Verarbeitung in Navigationssystemen, Flottenmanagementsysteme, Verkehrsführungssysteme und Fahrzeugortung.  
In Kombination mit flacher Cellular-Telefonantenne
- geringe Bauhöhe ca. 21 mm / 0.8 in.
- Abdeckung europäischer und US-amerikanischer Cellular-Telefon-Frequenzen
- Montage auf unterschiedlichsten Oberflächen (z.B. Kunststoff, Metall ...)
- *Reception antenna for GPS satellite signals for processing in navigation systems, fleet management systems, traffic guidance systems and vehicle location.  
In combination with low profile cellular phone antenna.*
- *Low body height ca. 21 mm / 0.8 in.*
- *Coverage of European and American cellular phone frequencies*
- *Mounting on several surfaces (e.g. plastics, metal ...)*

### Änderungen vorbehalten / Subject to alterations

#### Technische Daten / Technical data

Abmessungen / Dimensions	100 mm x 74 mm x 21 mm / 3.9 x 2.9 x 0.8 in.	
Gewicht / Weight	...SMB/FME (...-001):	173 g / 6.1 oz.
	...SMA/SMA/3.0 (...-004):	240 g / 8.5 oz.
	...FAKRA/3.0 (...-005):	240 g / 8.5 oz.
Temperaturbereich / Temperature range	-40 - +80°C / -40 - +176 °F	
Schutzklasse / Protection class	IP66 (acc. IEC 60529)	
<b>GPS</b>		
Frequenzbereich / Frequency range	1,57542 GHz ± 1.023 MHz, (L1-band)	
Impedanz / Impedance	50 Ohm	
VSWR	≤ 2,0	
Gewinn / Gain	2 dBic <sup>1)</sup>	
Polarisation / Polarization	RHCP	
Verstärkung / Amplification	27 ± 3 dB	
Rauschmaß / Noise figure (50 Ohm)	≤ 2,5 dB	
Betriebsspannung / Voltage supply	3 - 5,5 VDC (ferngespeist, <i>remotely fed</i> )	
Stromaufnahme / Current consumption	≤ 25 mA bei/at 5 V	
<b>Cellular</b>		
Frequenzbereich / Frequency range	AMPS:	824 - 894 MHz
	GSM 900:	880 - 960 MHz
	GSM 1800:	1710 - 1880 MHz
	GSM 1900:	1850 - 1990 MHz
	UMTS:	1920 - 2170 MHz
Impedanz / Impedance	50 Ohm	
VSWR	≤ 2,0	
Gewinn / Gain	0 dB <sup>2)</sup>	
Polarisation / Polarization	linear, vertikal / <i>linear, vertical</i>	
Belastbarkeit / Load capacity	max.	10 W gepulst, <i>pulsed acc. GSM standard</i>
Diagnose / Diagnostic	Resistor 10 kOhm	

## Datenblatt / Datasheet

### GPS 18 90 LP/S/...

Erz-Nr. / Ord. code

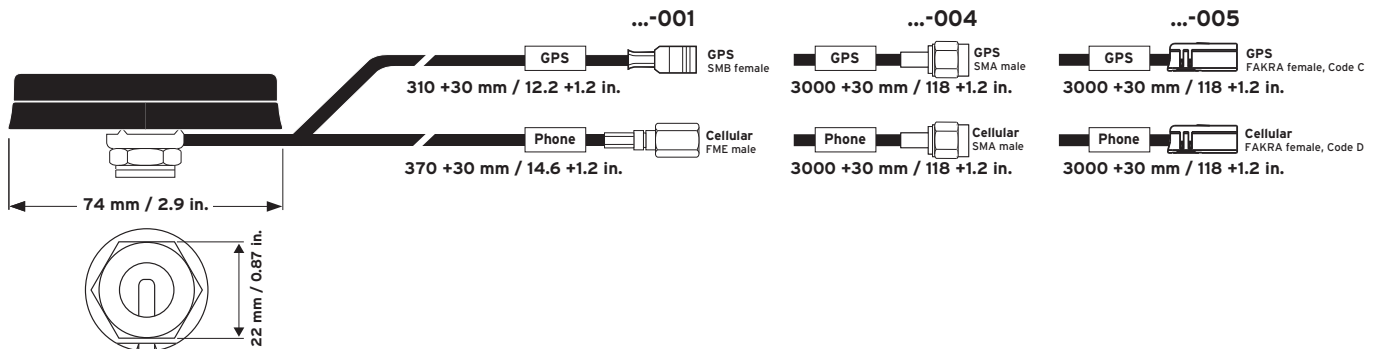
### 920 062-...

Änderungen vorbehalten / Subject to alterations

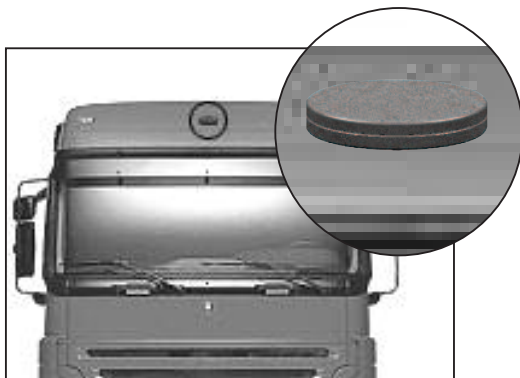
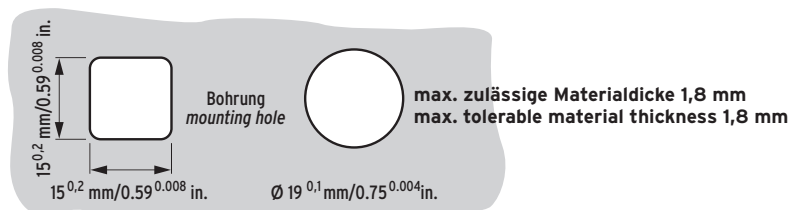
#### Kabel und Anschluss / Cable and Connector (RG 174)

Kabellänge / Cable length	920 062-001:	GPS:	310 +30 mm / 12.2 +1.2 in.
		Cellular:	370 +30 mm / 14.6 +1.2 in.
	920 062-004:	GPS:	3000 +30 mm / 118 +1.2 in.
		Cellular:	3000 +30 mm / 118 +1.2 in.
	920 062-005:	GPS:	3000 +30 mm / 118 +1.2 in.
		Cellular:	3000 +30 mm / 118 +1.2 in.
Anschluss / Connector	920 062-001:	GPS:	SMB female
		Cellular:	FME male
	920 062-004:	GPS:	SMA male
		Cellular:	SMA male
	920 062-005:	GPS:	FAKRA female, Code C blue
		Cellular:	FAKRA female, Code D bordeaux

- 1) dBic: gemessen gegenüber Isotropen-Strahler, zirkulare Polarisation / referenced to an isotropic radiator, circular polarization  
 2) dBi: gemessen gegenüber Isotropen-Strahler / referenced to an isotropic radiator



#### Montage / Installation



Datenblatt / Datasheet

Änderungen vorbehalten / *Subject to alterations*

**Montage auf Metallplatte /  
Installation on groundplane**

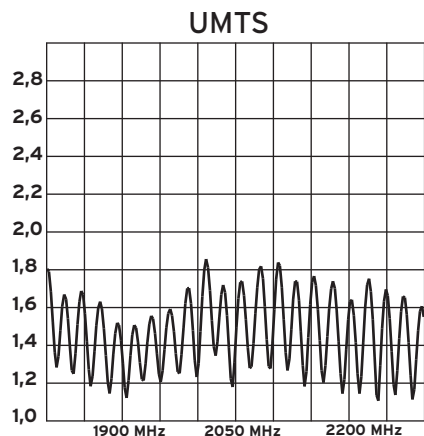
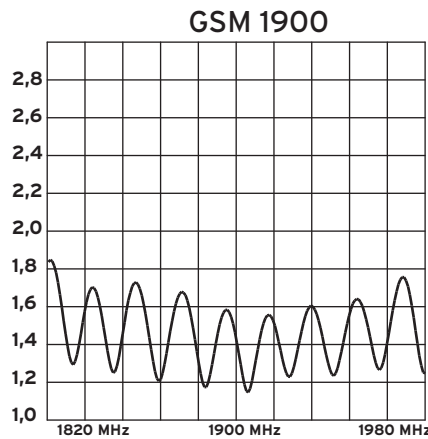
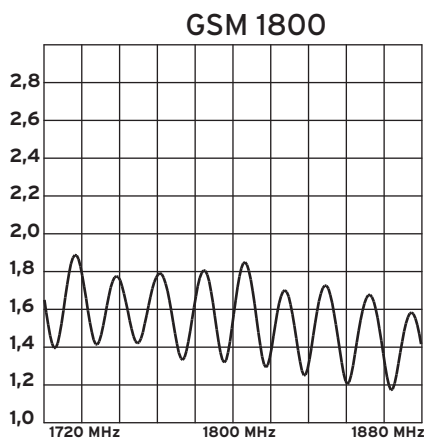
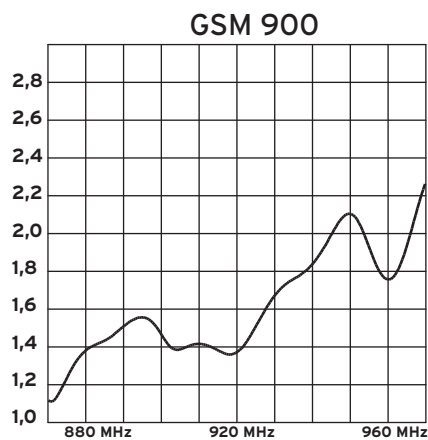
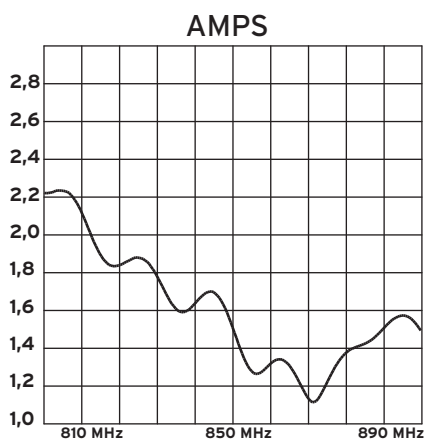
**GPS 18 90 LP/S/...**

Erz-Nr. / Ord. code

**920 062-...**

**Antennendiagramme  
Antenna diagrams**

Typisches VSWR / *Typical VSWR*



Datenblatt / Datasheet

Änderungen vorbehalten / *Subject to alterations*

**Montage auf nicht leitendem Untergrund /**  
**Installation on non conductable plane**

**GPS 18 90 LP/S/...**

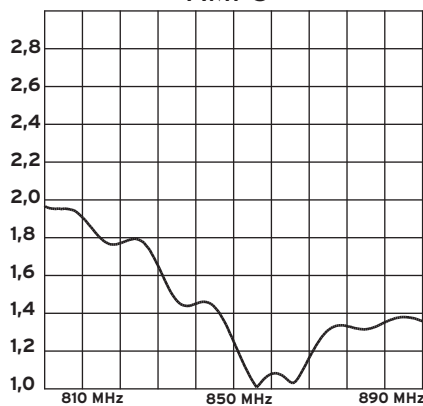
Erz-Nr. / Ord. code

**920 062-...**

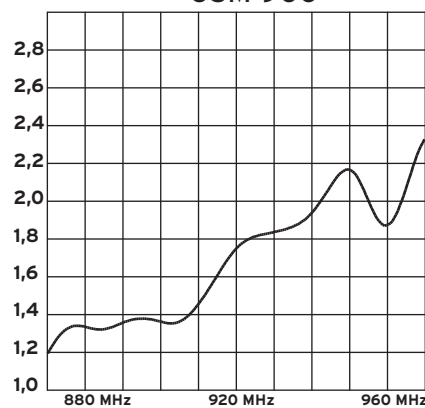
**Antennendiagramme**  
**Antenna diagrams**

Typisches VSWR / *Typical VSWR*

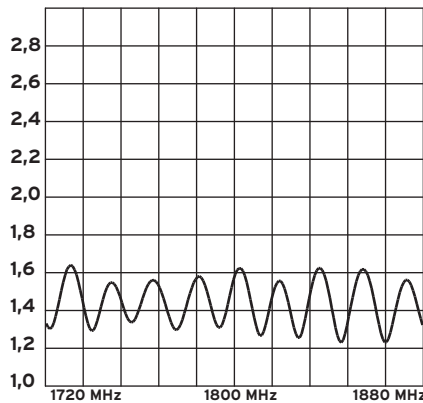
AMPS



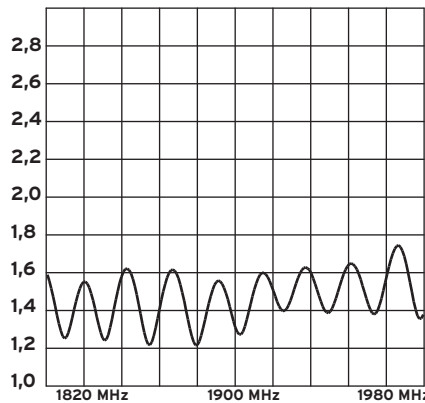
GSM 900



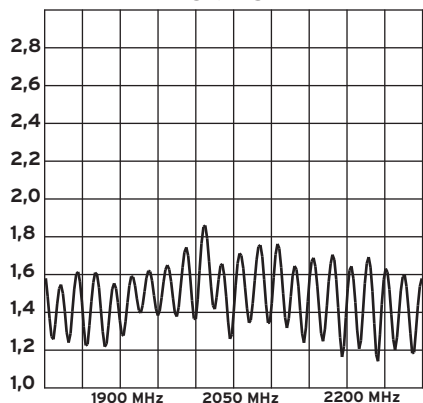
GSM 1800



GSM 1900



UMTS



Datenblatt / Datasheet

Änderungen vorbehalten / *Subject to alterations*

**Montage zwischen 2 Metallstreben /**  
**Installation between 2 metal bars**

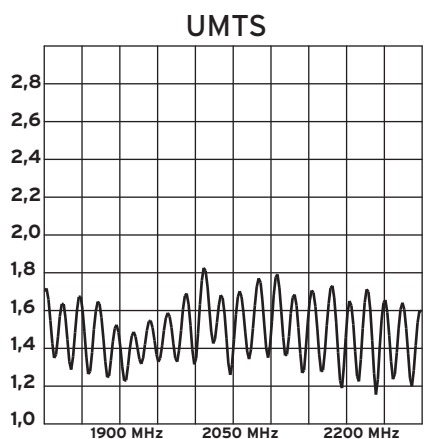
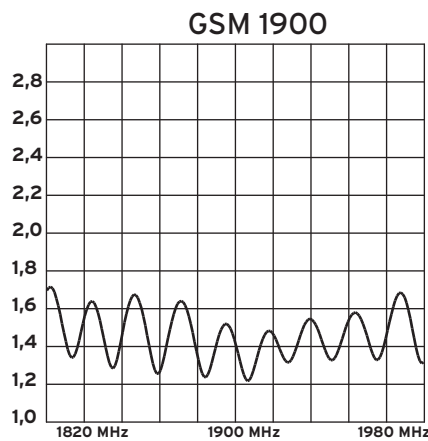
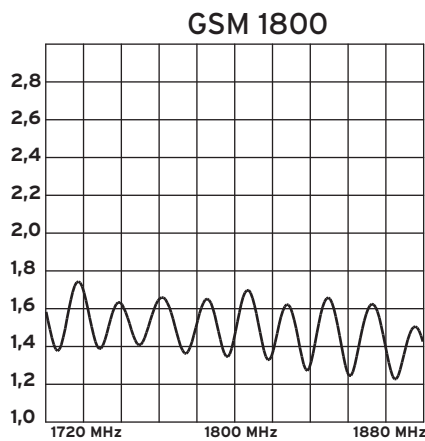
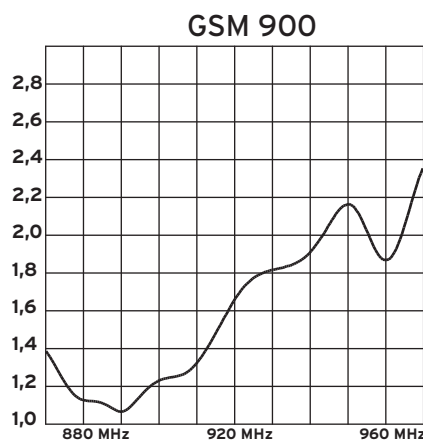
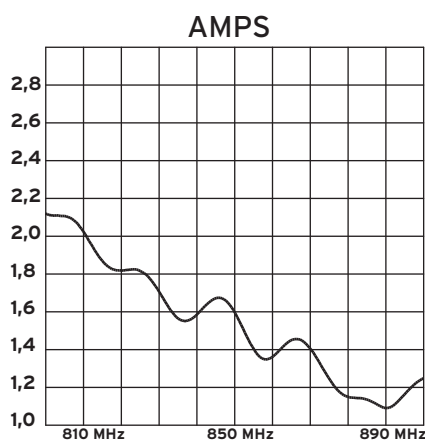
**GPS 18 90 LP/S/...**

Erz-Nr. / Ord. code

**920 062-...**

**Antennendiagramme**  
**Antenna diagrams**

Typisches VSWR / *Typical VSWR*



# GPS 18 90 LP/S/...

Erz-Nr. / Ord. code

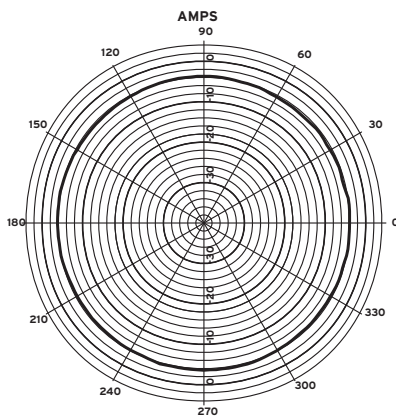
## 920 062-...

Änderungen vorbehalten / *Subject to alterations*

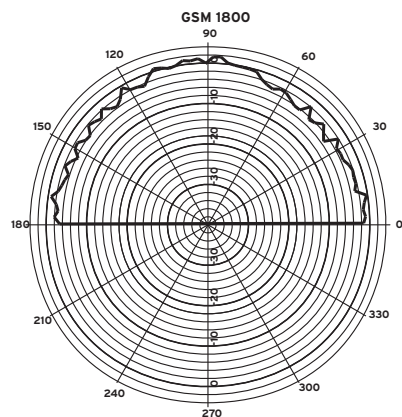
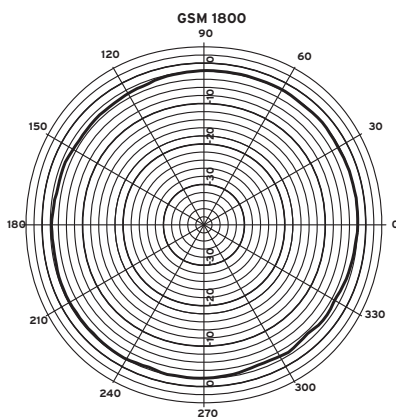
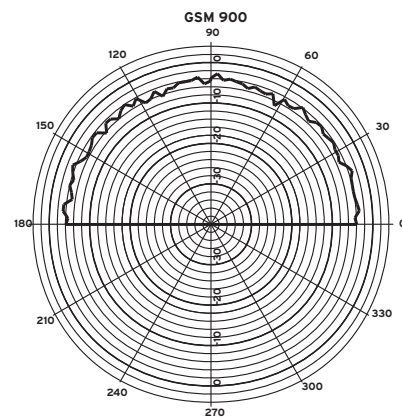
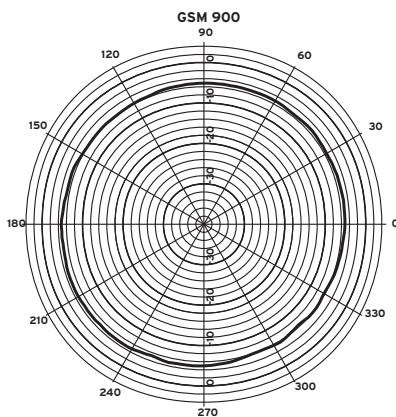
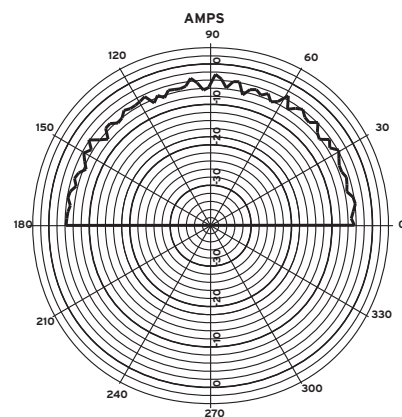
### Antennendiagramme *Antenna diagrams*

Typisches Strahlungsdiagramm / *Typical radiation pattern*

horizontal / Azimuth



vertikal / Elevation



# GPS 18 90 LP/S/...

Erz-Nr. / Ord. code

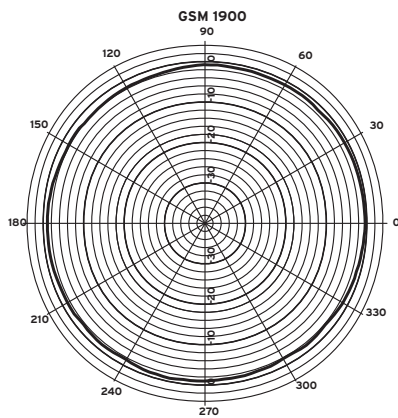
## 920 062-...

Änderungen vorbehalten / *Subject to alterations*

### Antennendiagramme *Antenna diagrams*

Typisches Strahlungsdiagramm / *Typical radiation pattern*

horizontal / *Azimuth*



vertikal / *Elevation*

