


GS-ANT-320



Technical Data			
GSM 698-960 MHz, 1710-2700 MHz			
MiMo & Diversity antenna, wall mount			
GSM	Frequency Range	698 - 960 MHz 1710 - 2700 MHz	
	Gain	698 - 960 MHz	6dBi
		1710 - 2700 MHz	9 dBi
	Operational bands	2G / 3G / 4G	
	Efficiency	> 65%	
	Correlation coefficient	< 0.05	
	Power Max.	20 W	
	Impedance	50 Ω	
	Radiation pattern	Directional	
Mechanical Data			
	Dimensions (HxWxL)	230 mm x 180 mm x 94 mm	
	Operating temp	-30°C .. +70°C	
	Material	U.V. stable, impact resistant ASA	
	Cable	2x ca. 5 m: CS29 (double shielded RG58)	
	Connector	2x SMA (male)	
			
	Wall / desk / mast mount		
	RoHS compliant		

GS-ANT-320

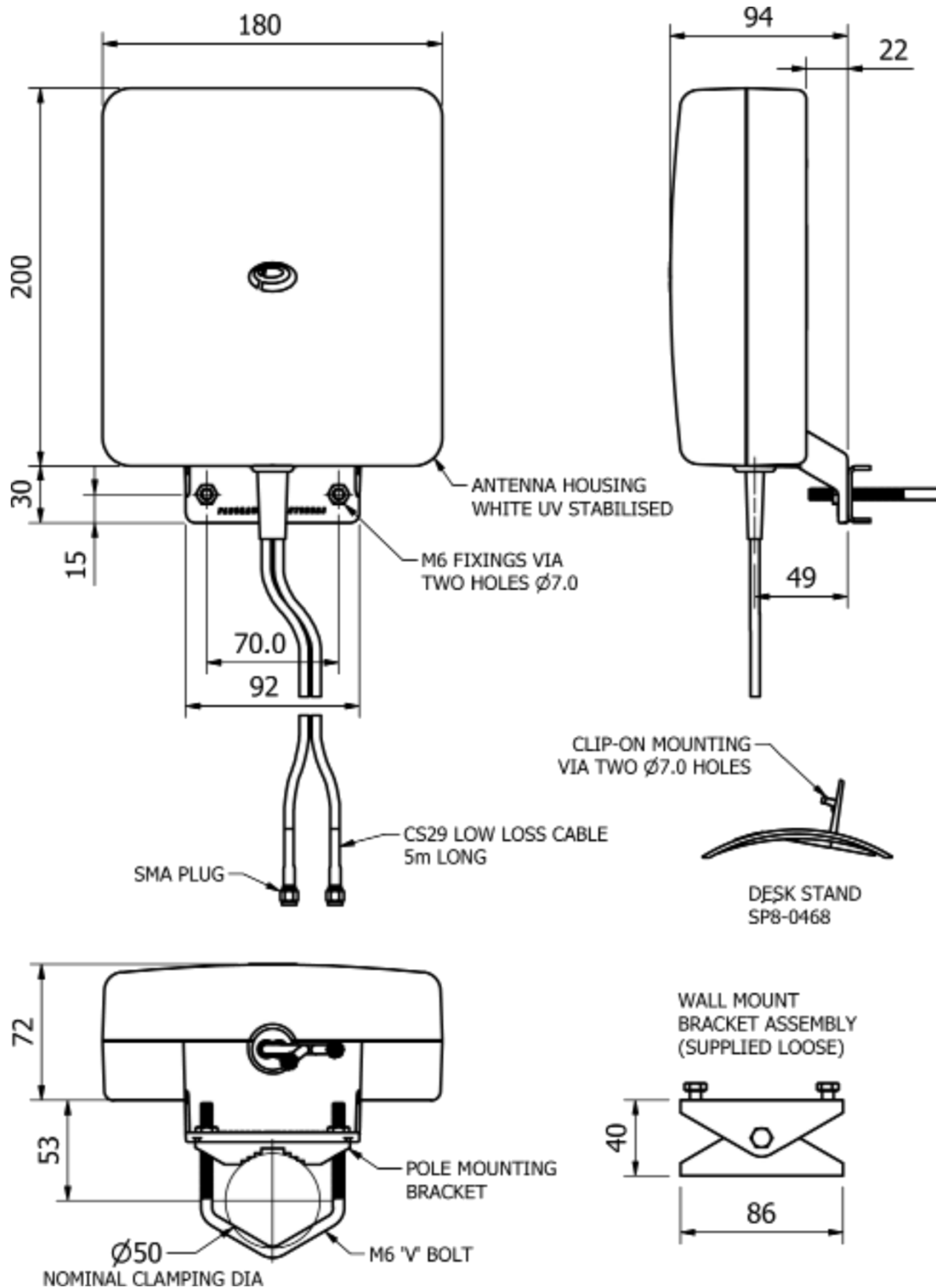


Figure 1; Mechanical drawings

GS-ANT-320

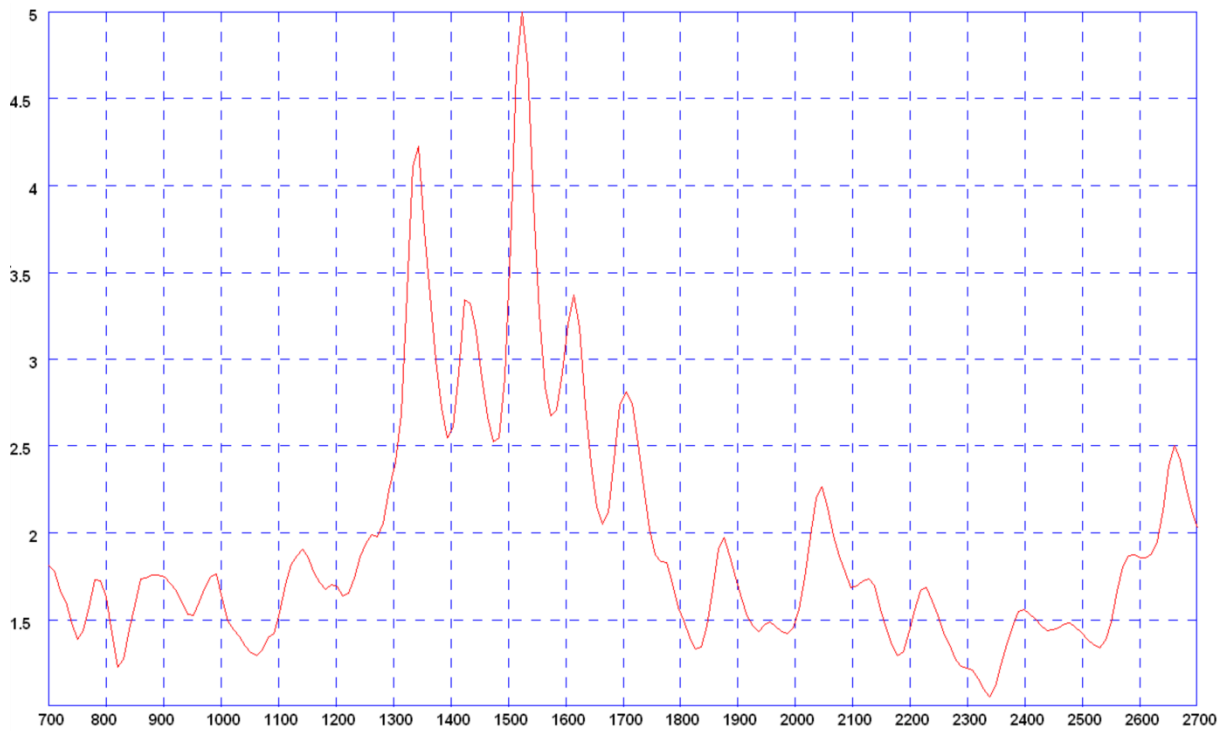


Figure 2; typical VSWR elements 1 & 2
* VSWR measured with 0.5m cable

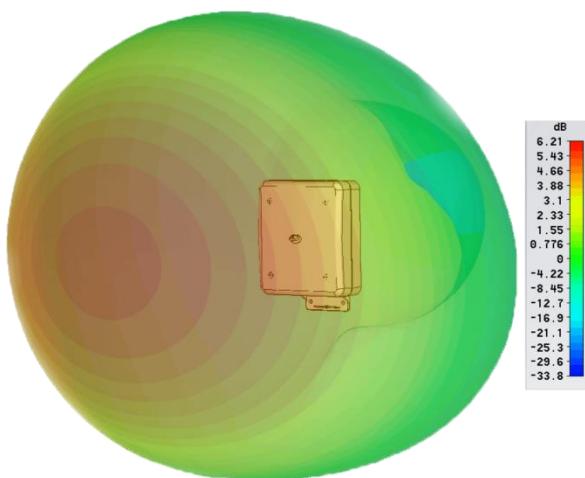


Figure 3; 3D gain plot (750MHz)

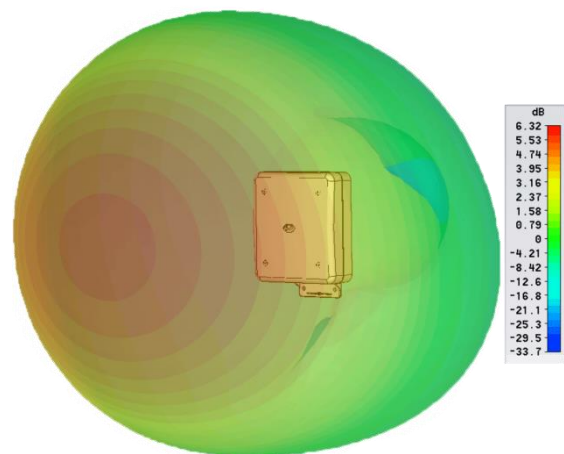


Figure 4; 3D gain plot (850MHz)

GS-ANT-320

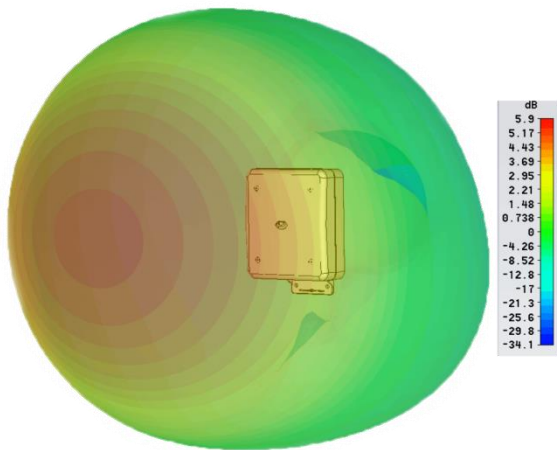


Figure 5; 3D gain plot (950MHz)

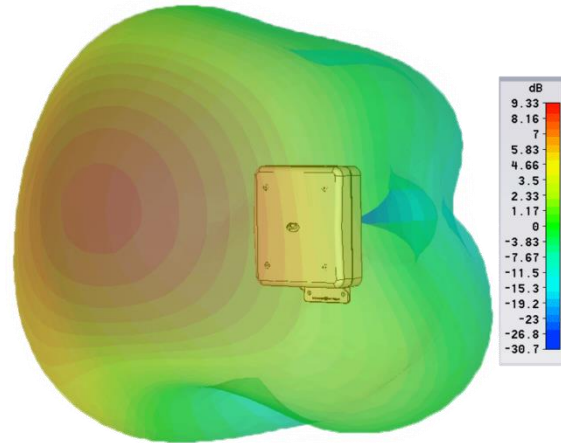


Figure 6; 3D gain plot (1850MHz)

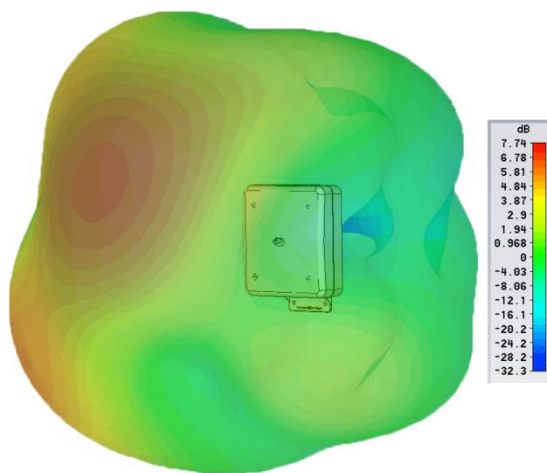


Figure 7; 3D gain plot (2100MHz)

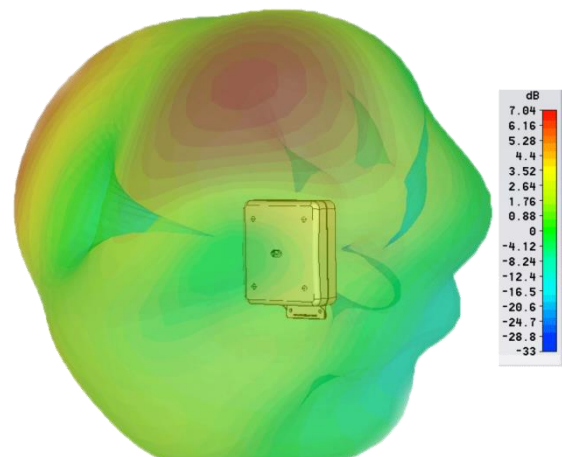


Figure 8; 3D gain plot (2600MHz)

* 3D patterns show realized gain both elements fed