


GS-ANT-323



Technical Data	
2G, 3G, 4G, 5G - MiMo & Diversity antenna, wall mount, desk mount, mast mount	
Frequency Range	698 - 960 MHz 1710 - 2700 MHz 3400 - 3800 MHz
Peak Gain	698 - 960 MHz 6 dBi 1710 - 2170 MHz 9 dBi 2200 - 2700 MHz 9 dBi 3400 - 3800 MHz 9 dBi
Operational bands	2G / 3G / 4G / 5G
Efficiency	> 60%
Correlation coefficient (all bands)	< 0.1
Power Max.	20 W
Impedance	50 Ω
Nominal Polarisation	+/- 45 deg Vertical
Mechanical Data	
Dimensions (HxWxL)	230 mm x 180 mm x 94 mm
Operating temp	-30°C .. +80°C
Material	ASA (RAL 9010 – pure white)
Cable	2x ca. 5 m: CS29 (double shielded RG58)
Connector	2x SMA (male) 
	Wall / desk / mast mount
	RoHS compliant

GS-ANT-323

Figure 1; Mechanical drawings

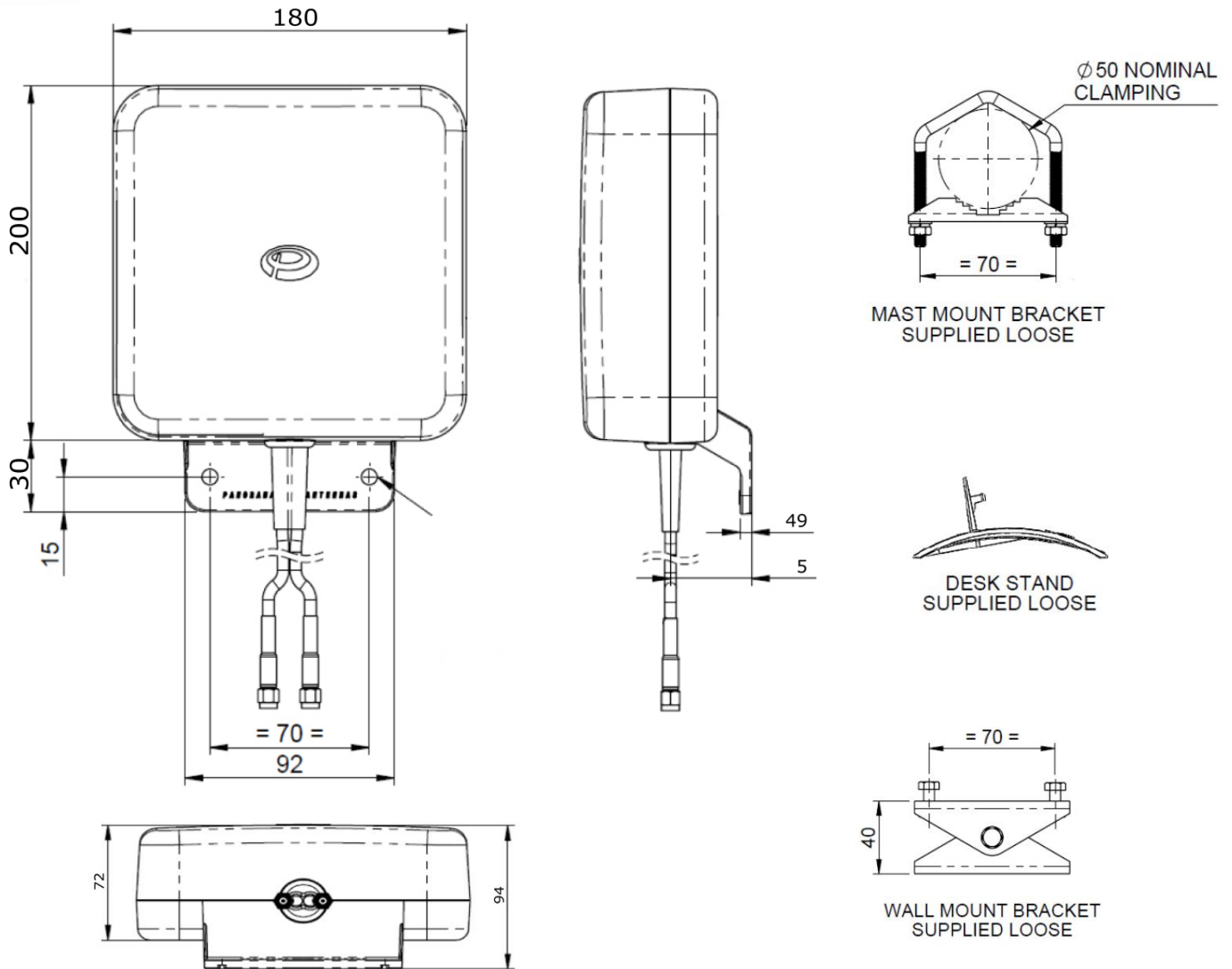
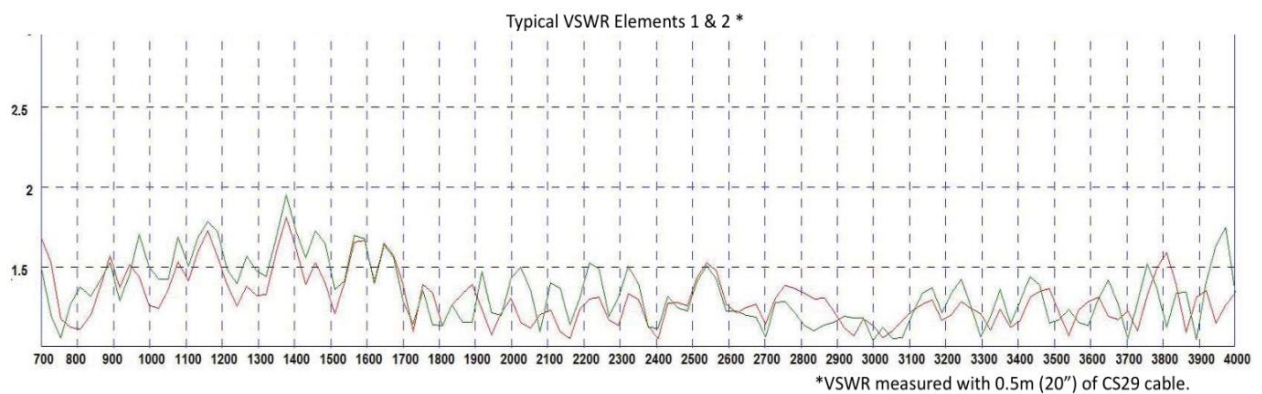
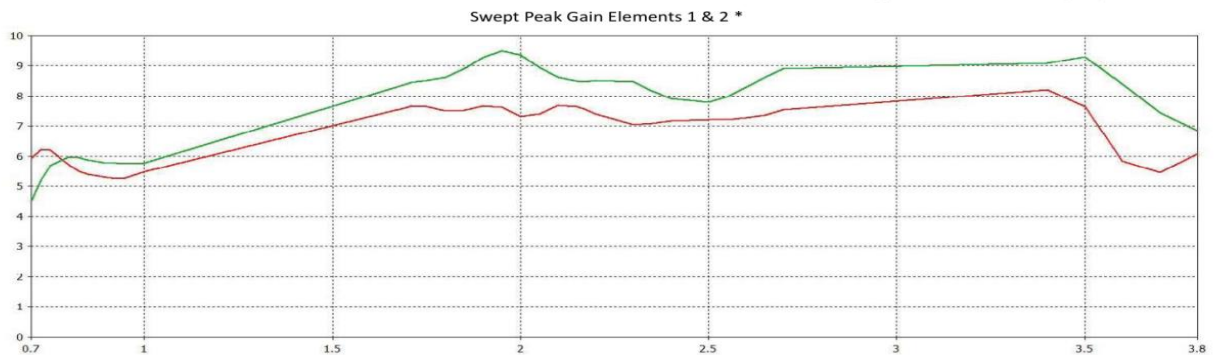
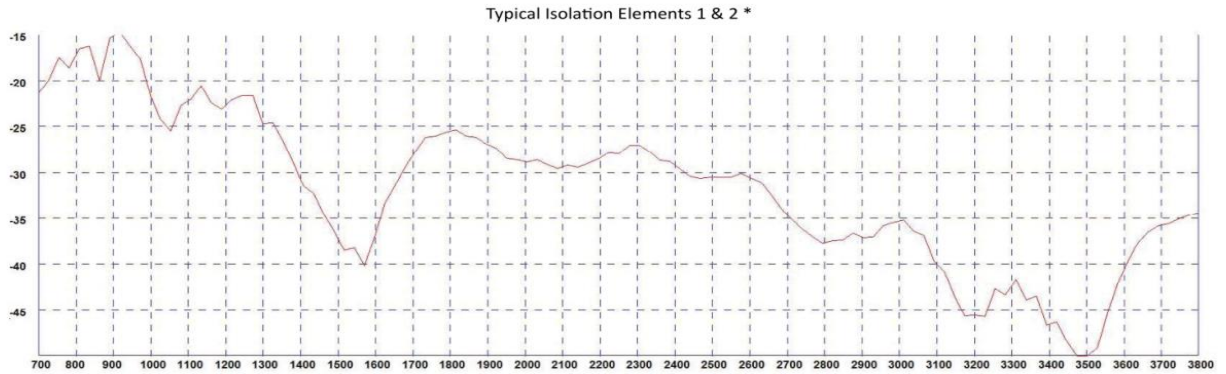


Figure 2; typical VSWR elements 1 & 2
 * VSWR measured with 5m cable

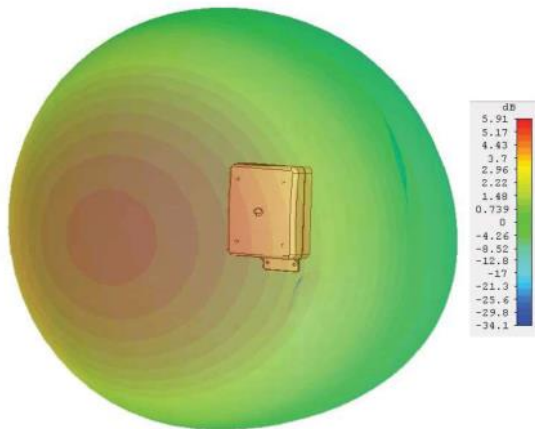


GS-ANT-323

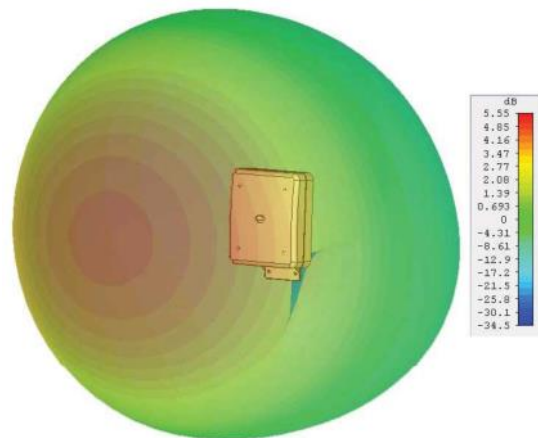


*Elements 1 & 2 swept peak gain without cable simulated in CST Microwave Studio

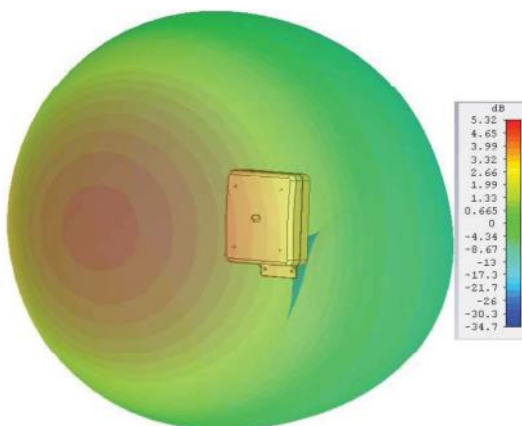
3D Gain Plot (750MHz)



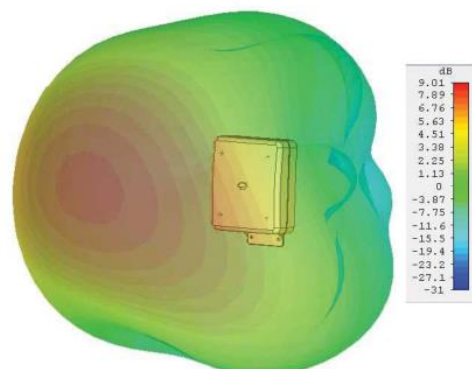
3D Gain Plot (850MHz)



3D Gain Plot (950MHz)

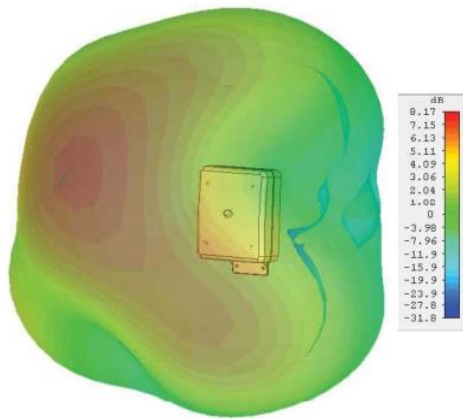


3D Gain Plot (1800MHz)

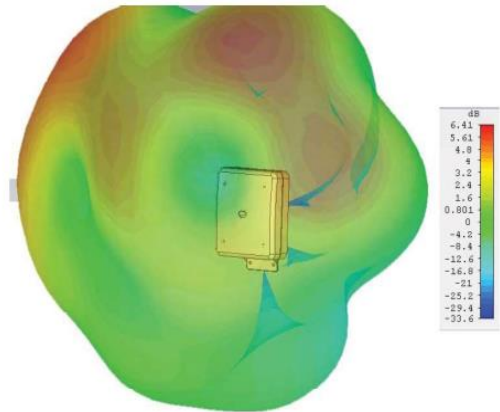


GS-ANT-323

3D Gain Plot (2000 MHz)



3D Gain Plot (2600 MHz)



3D Gain Plot (3600MHz)

