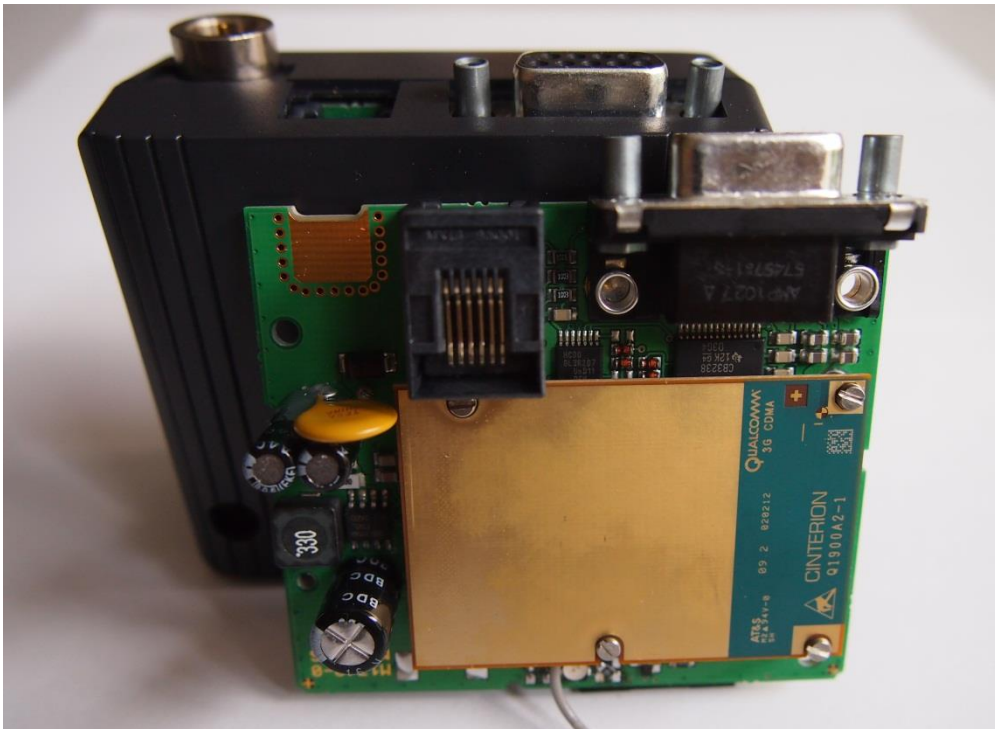


UMTS Terminal

GS-PH8-P-TERM-001 (with housing)

GS-PH8-P-TP-001 (without housing)



Data Sheet

GS-M2M accessories GmbH

Albert – Einstein – Straße 13, 30926 Seelze

Tel.: +49 511 473530 91, Fax: +49 511 473530 88

E-Mail: gs@gs-m2m.de, Internet: www.gs-m2m.de

Date: 13.08.2012

Features

General

- Cinterion PH8-P module
- Data transmission via GPRS (Class 12) EDGE, UMTS, HSPA+
- Quadband GPRS/EDGE
- Five Band UMTS/HSPA+
- Serial interface
- Optional USB interface
- Optional GPS
- Sleep or standby mode possible
- Low power consumption
- Solar operation and battery operation

Application examples

- > Vending machines
- > Parking systems
- > E-loading for cellular mobile telephony
- > Mobile payment systems
- > Telemetry

Full coverage availability of the GSM and UMTS network, falling prices in the area of wireless telecommunication, and increasing prices for service and maintenance make it ever more economically interesting to monitor and control vending machines, devices, and systems via wireless telephony.

With the ***GS-PH8-P Terminal*** a wide variety of applications can be easily adapted to the GSM/UMTS network.

In the most simple case, data is transmitted per SMS and can be extended up to a bi-directional data connection via GPRS or UMTS to a central facility.

The ***GS-PH8-P Terminal*** can be operated in sleep mode or standby mode, thus battery-powered and solar-powered devices can also be equipped with this technology.

Technical data

General features

- Operating temperature range: -25°C to + 70°C
- Storage: -40°C to + 85°C
- Protection class: IP 21
- Power supply: 9 – 45 V DC
- Power consumption: Typ. 1,0 mA sleep mode

UMTS Modul

- Type: Cinterion PH8-P
- Five Band UMTS/HSPA 800/850/900/1900/2100
- Quadband GSM 850/900/1800/1900

Interfaces

- Antenna connector FME (male)
- Plug-in power supply connector (6-pole Western jack)
- Mini-SIM card reader, 1.8 V and 3.0 V
- RS-232 interface (D-sub 9-pole female socket)
- Operating status LED
- USB 2.0 option
- GPS Antenna connector option